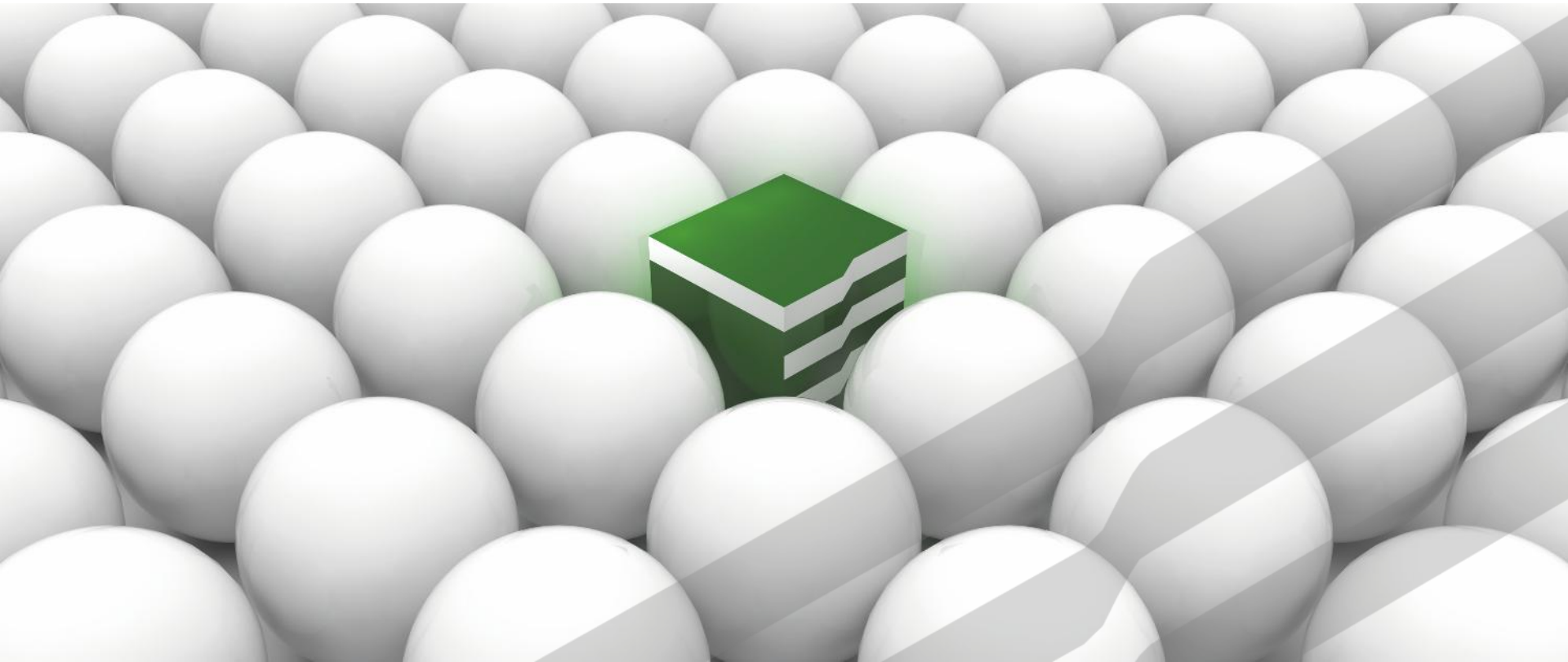


Company Profile



Who is Green Box?

SINCE 1991

Green Box designs, develops and manufactures
Chillers, Fluid-Coolers and Temperature Controllers
for precise temperature regulation of water and other process fluids
used in industrial applications

Who is Green Box?

Fundamental design criteria for all our machines are:

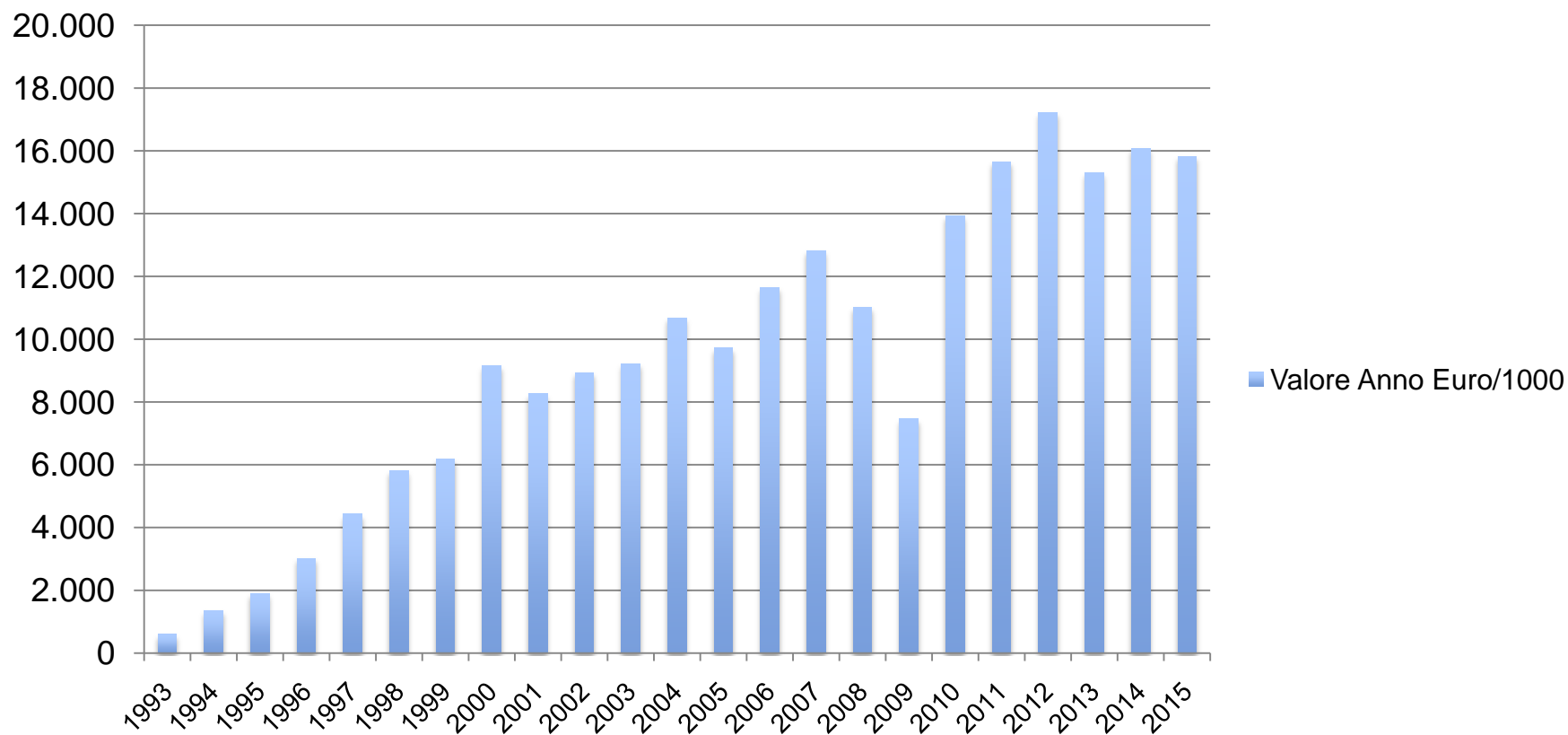
- energy savings,
- long term reliability,
- high working efficiency,
- easy access to all internal parts,
- “plug and play” installation
- modularity concept to increase cooling capacity of the system

Head quarter in Italy:

Via Galilei, 2
35028 Piove di Sacco (PD)
Tel 049-9703319 fax 049-9701968
info@greenbox.it www.greenbox.it



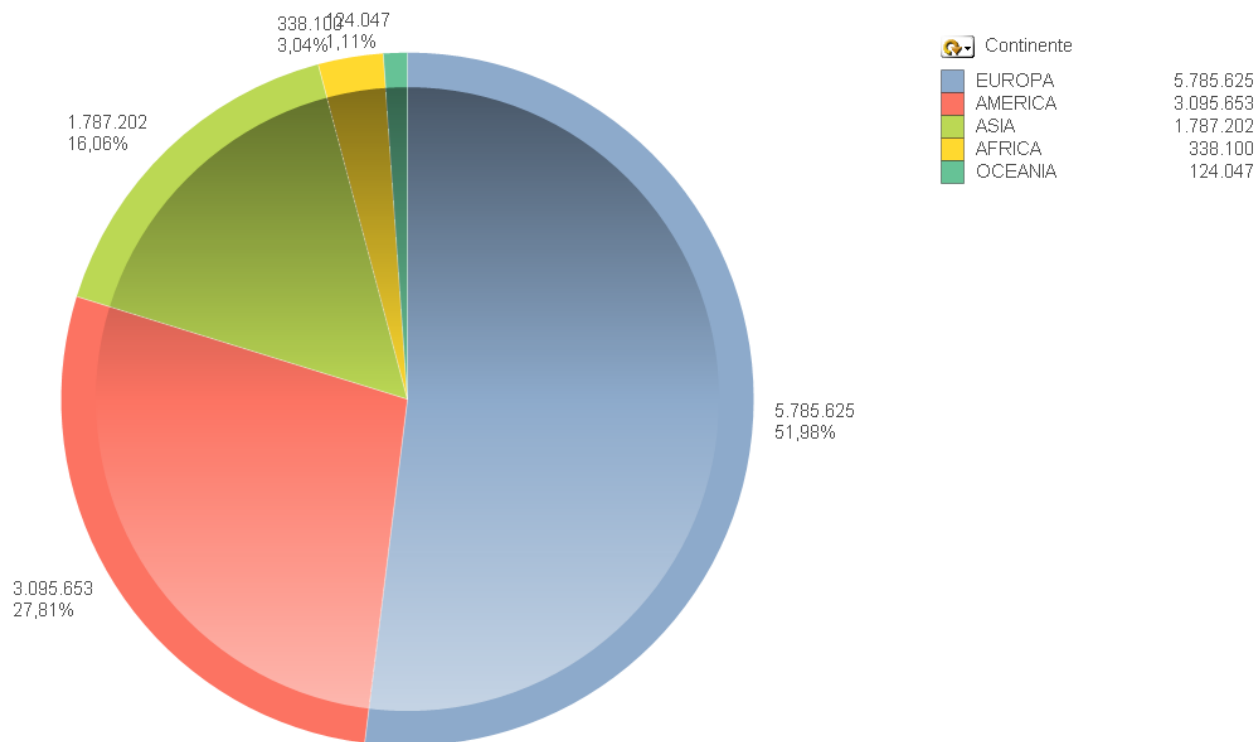
Turnover Green Box



20% Italy

80% Export:

Valore



52% Europe
28% Americas
16% Asia
4% Other



4200 m² for warehouse and
production lines

Internal technical
department and R&D

Production lines with Lean Philosophy



Testing room for large chillers, for small chillers and temperature control units



Our products





air cooled water chillers

KW 3,5 - 604



> MEC kW 3,5 - 10



> MR kW 11 - 57



> MR-M-AP/MR-H-AP kW 73 - 604



> MR-M/MR-H kW 73 - 604



> MR-M/MR-H kW 73 - 604



> MR-M/MR-H kW 73 - 604



air cooled water chillers

KW 31 - 914



> UNI kW 31 - 101



> TWIN kW 62 - 202



> MULTI kW 124 - 404



> SFA kW 430 - 880



> SFW/LC kW 508 - 914



> SFW/LC kW 508 - 914



water cooled water chillers

KW 11 - 880



> MINIBOX kW 11 - 146



> S-M/S/W S-H/SW kW 60 - 704



> SFW kW 430 - 880



thermo-chillers

KW 3,3 - 115



> PICOBOX kW 3,3 - 5,4 heating kW 3 - 6



> MINIBOX kW 11 - 115 heating kW 6 - 24



> MINIBOX kW 11 - 115 heating kW 6 - 24



free-cooler

— kW 65 - 1400 —



> FC-90 kW 75 - 1400



> FC-90 kW 75 - 1400



> FC-90 kW 103 - 1400



> FC-90 kW 103 - 1400



> GP3



> GP2



temperature controllers

kW 0 - 150



> MICROBOX kW 6



> TB-S kW 3 - 9
> MVS DCS kW 6



> TB-M kW 6 - 18
> TB-P kW 3 - 24



> TB-D kW 3 - 9
> MVD DCD kW 6



> TBH OH-OHT kW 3 - 13,5



> TBP200 kW 9 - 36



> DUAL T kW 24 - 72



> TG1 kW 0 - 150



> TG3

Mould temperature controllers



**Mould Temperature
Controllers**
(water type)

**Mould Temperature
Controllers**
(oil and water type)

**Mould Temperature
Controllers**
(pressurized water type)



MV Temperature control units

- Possibility to boost process temperature up and to control it accurately
- Designed to have the suitable water flow and pressure for each mould



Multizone temperature controllers



**Multi Zones Temperature
Controllers**
(water, oil and pressurized water type)



m³/h 280 - 3600



> AC 500 (air cooler)



> MD (mould dryer)



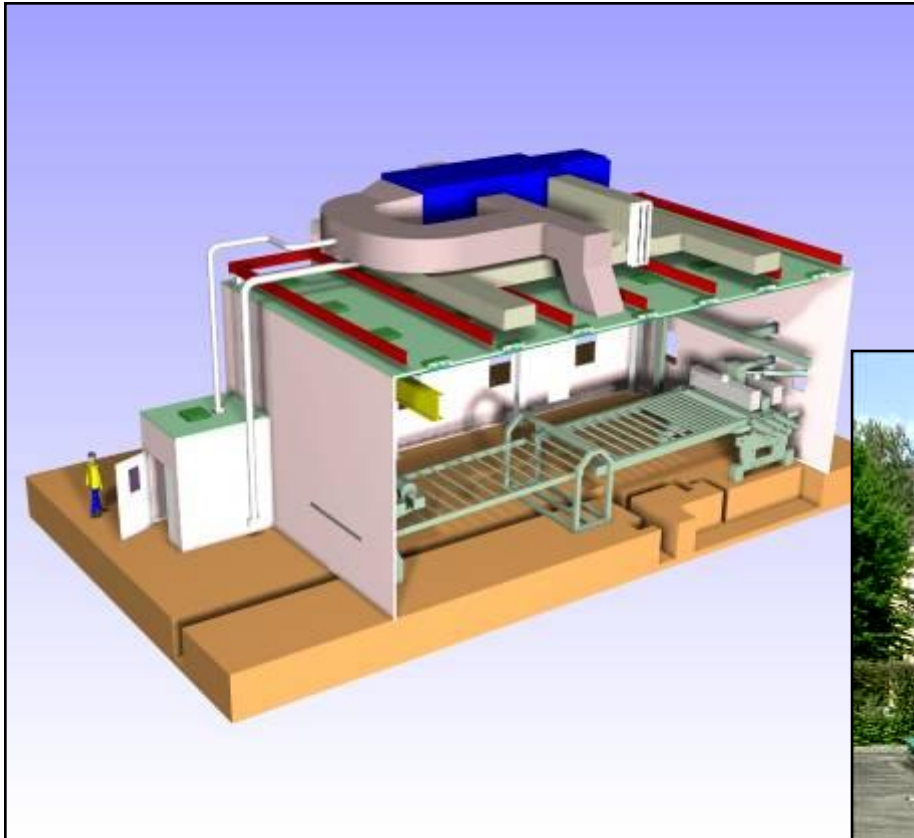
Cap box



The line consists of:

- ❶ **Cap Feeder:** cap conveyor system to Cap Cooler (with pneumatic feeding or with conveyors)
- ❷ **Cap Cooler:** cooling system
- ❸ **OTGV:** cap feeding and orienting system to the quality control unit
- ❹ **Cap Sorter:** cap quality control to detect and reject pieces not complying to technical specifications.
- ❺ **Box Shifter:** feeding system for multiple boxes with conveyor

CLEAN ROOMS



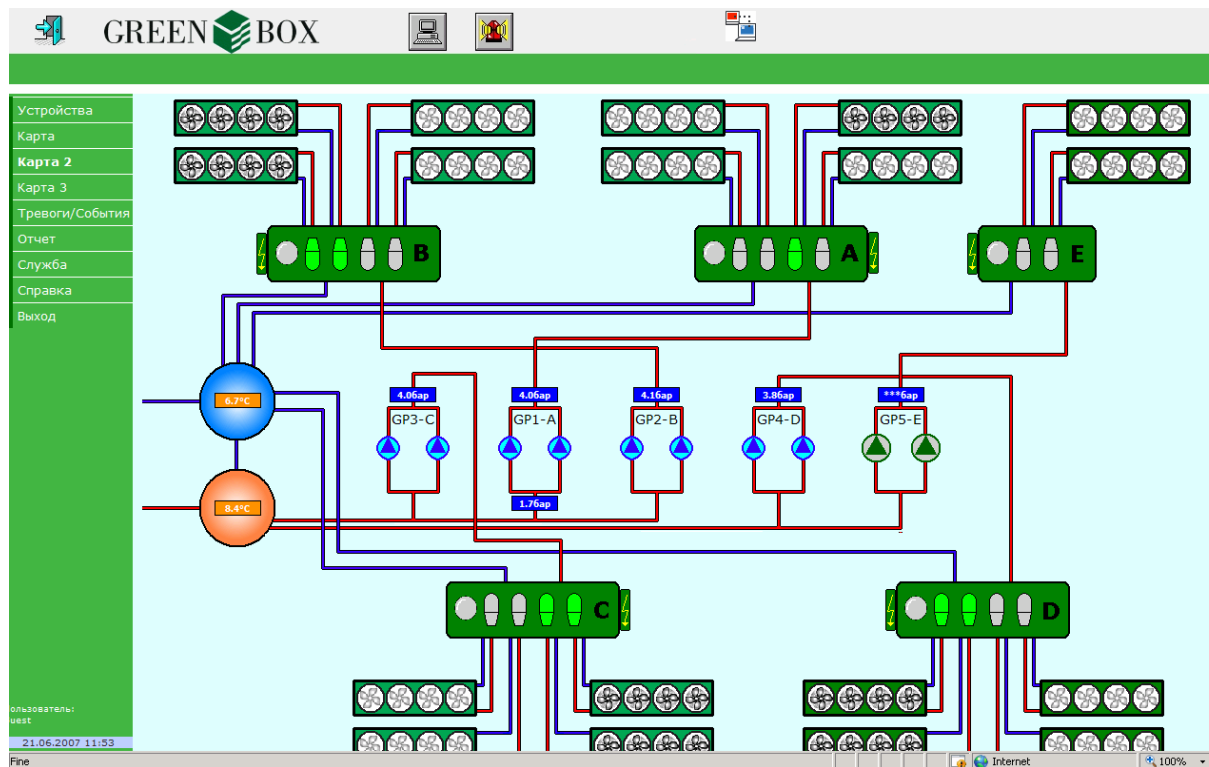


CLEAN ROOMS

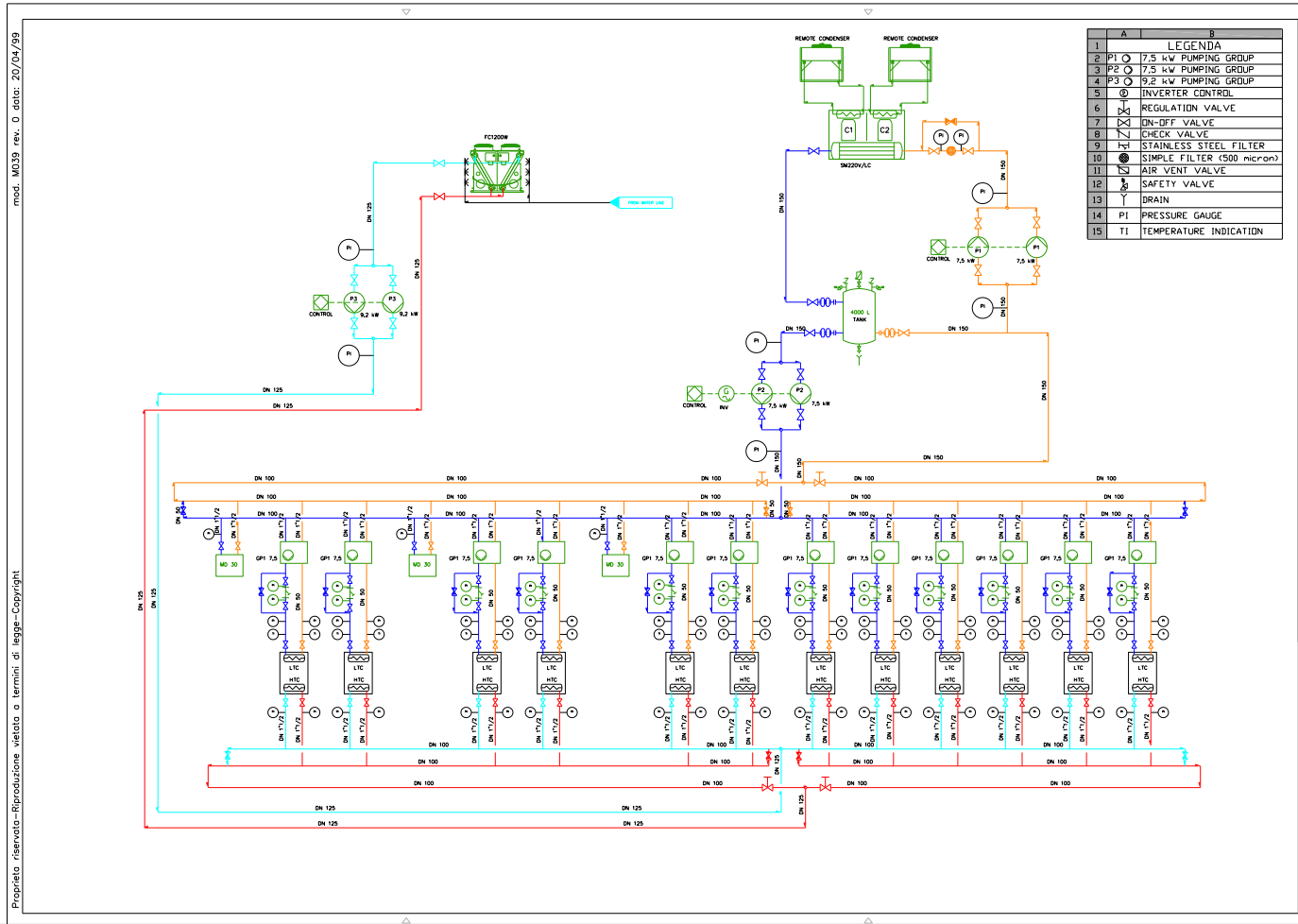


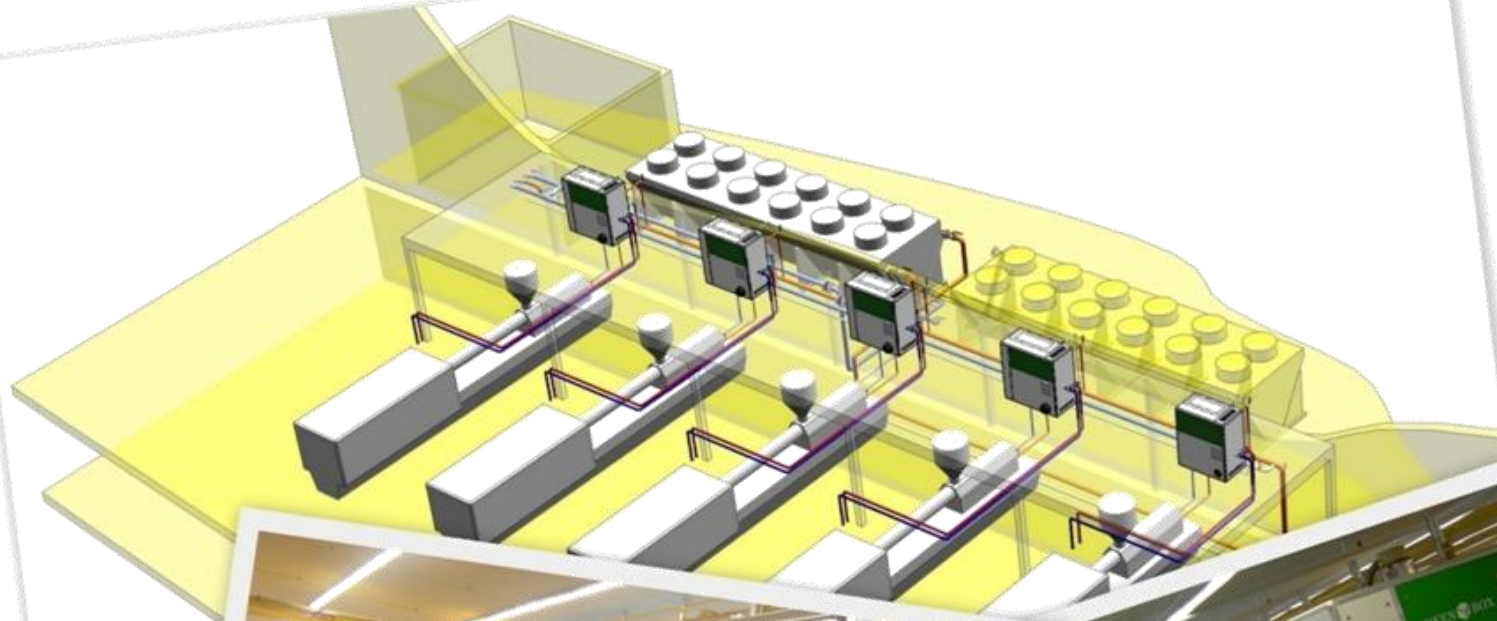
Modern quality standards require a continuous control of production .

The Green Box PI@ntvisor is a tool designed to keep under control all the components of a Green Box cooling system from a remote station. It can monitor one single chiller or a big plant installation.

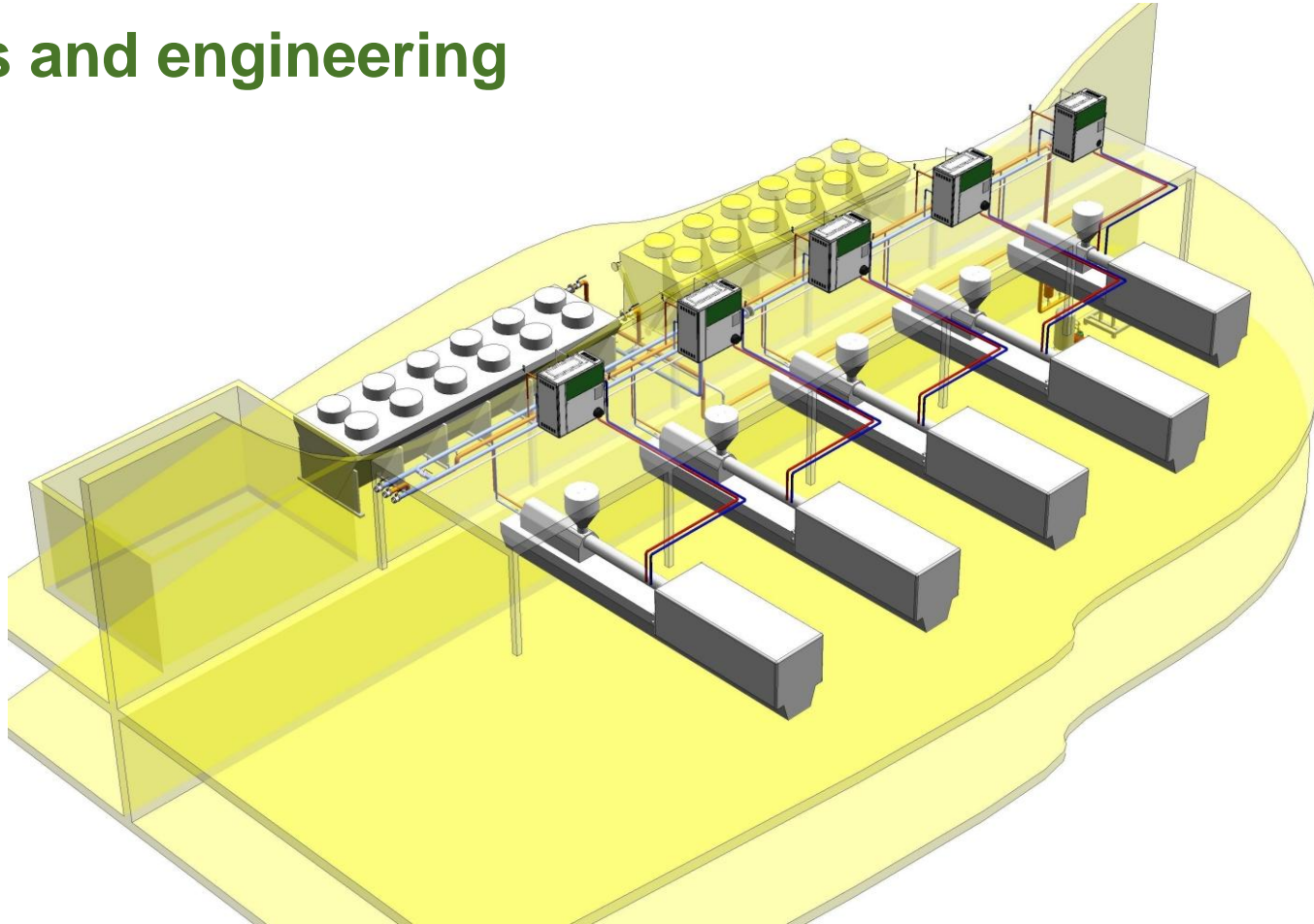


Design of water circuits - flow sheet

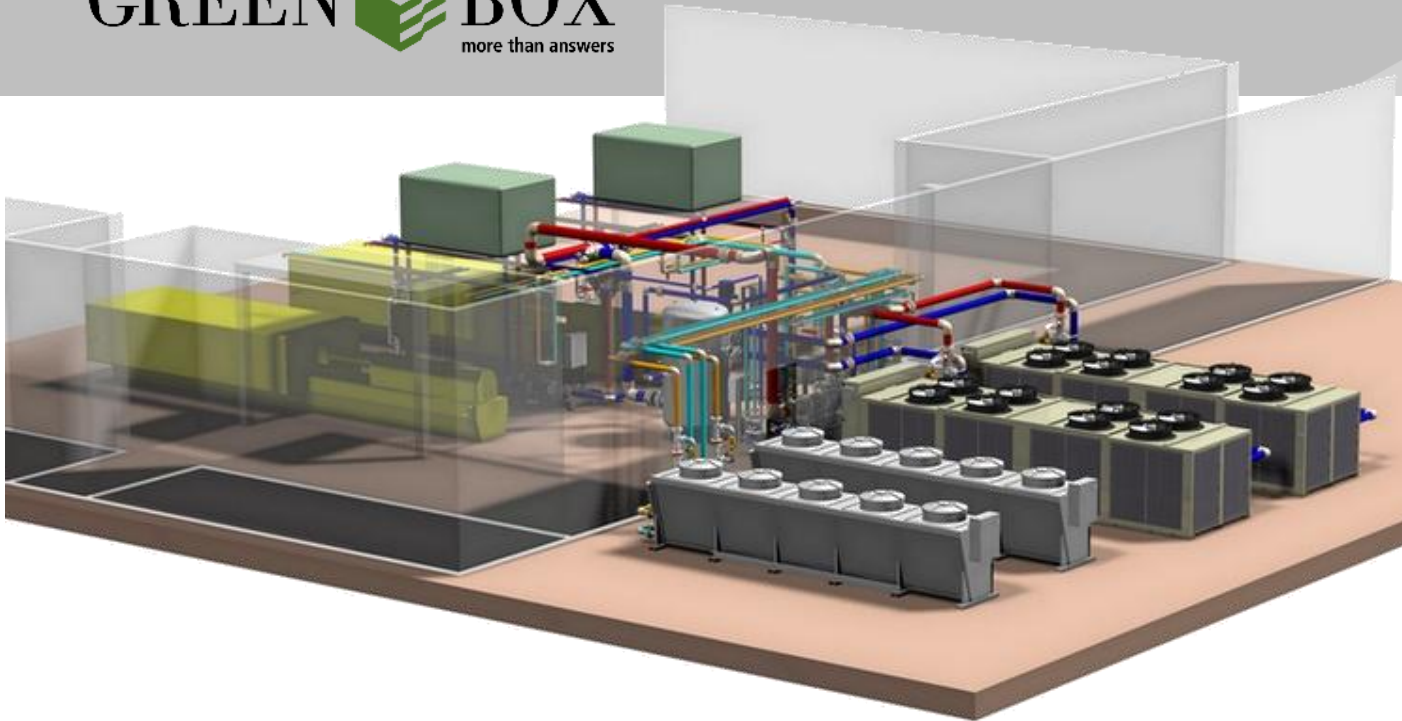




Process and engineering

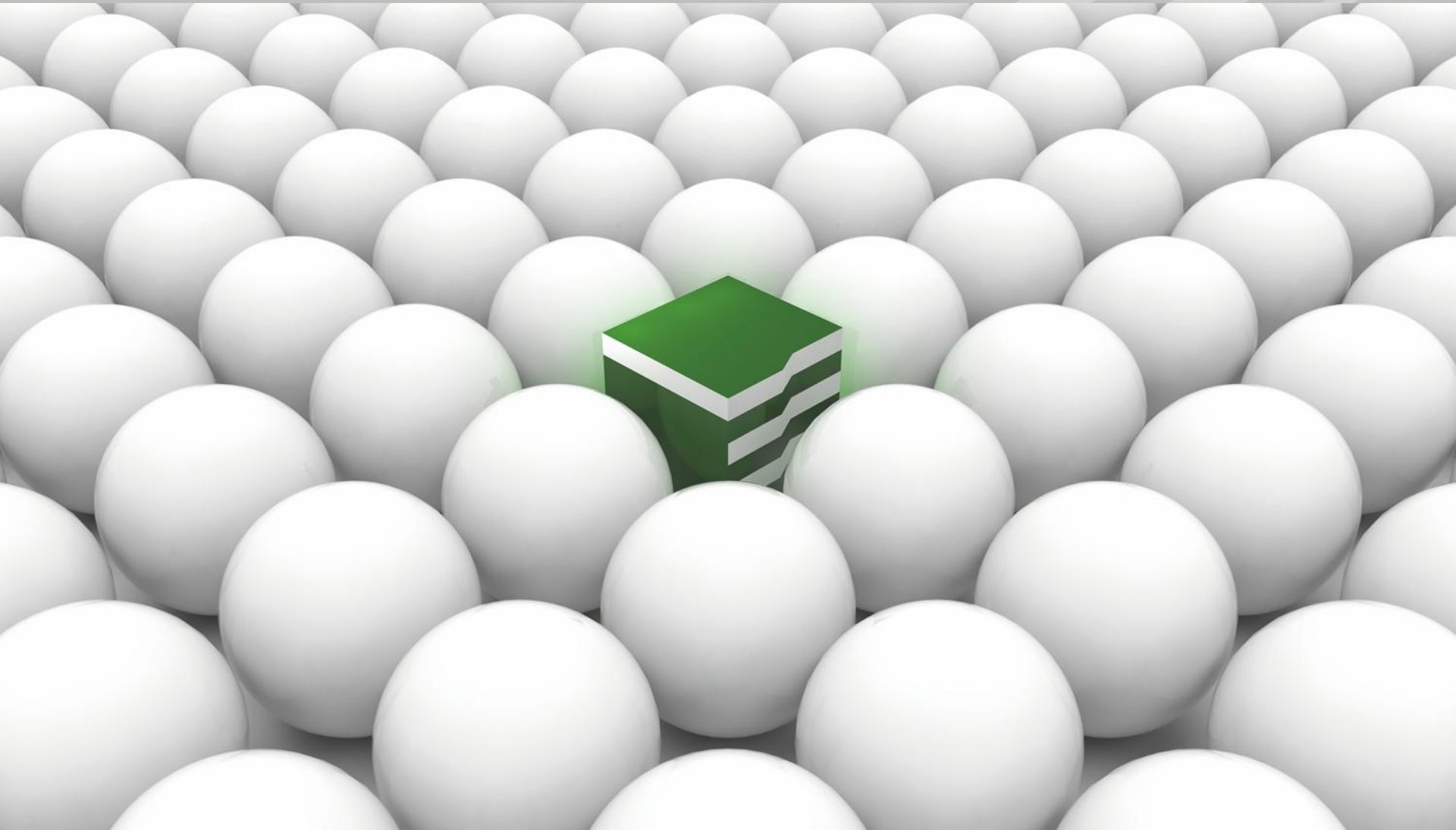


Green Box - water cooled chillers + free-cooler



Turn-key projects





More than answers